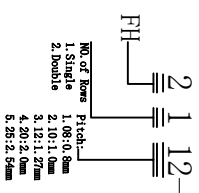


Specifications:
 Current Rating: 1.0 Amp
 Contact resistance: 20MΩ Max
 Insulator resistance: 1000MΩ Min.
 Withstanding Voltage: 500V AC
 Operating Temperature Range: -40° ~ +105° C
 Material And Finish
 Insulator: Polyester, (PA6T UL94V-0)
 Insulator Color: Black
 Contact: Brass
 Contact Plated: See Contact Plated Tab.

Ordering information



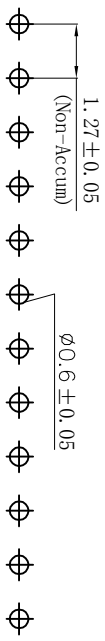
- NO. of Rows Pitch:
 1. Single 1.06/0.8mm
 2. Double 2.10/1.6mm
 3. 12/1.27mm
 4. 20/2.0mm
 5. 28/2.54mm

- NO. of PIN:
 1-500) 40=40P
 4. 20/2.0mm
 5. 28/2.54mm

- Plastic Height:
 20:2.0mm S180
 34:3.0mm R:90
 43:4.0mm M:90
 60:4.0mm W:90SMT
 63:6.0mm
 85:8.0mm

- Plastic Finishing:
 Material: 1:ibag
 2:FR9
 3:25ox
 3:PMPT
 4:PMPT
 5:12P

Code	Material	Code	Material	Code	Material
00	load 100"	10	Th. 100"	11	Th. 100"
01	load 10"	11	Th. 100"	12	Th. 200"
02	load 20"	12	Th. 100"	13	Th. 150"
03	load 30"	13	Th. 100"		
04	load 40"	14	Th. 100"		
05	load 100"	15	Th. 100"		
06	load 150"	16	Th. 100"		
07	load 200"	17	Th. 100"		



PCB LAYOUT

公差
 UNLESS OTHERWISE
 SPECIFIED TOLERANCE

线性 (LINER)

角度 (ANGLES)

第三视角投影
 THIRD ANGLE
 PROJECTION

品名 (TITLE):

绘图 (DRAWING)

审核 (CHECK)

批准 (APPROVED)

日期 (DATE)



FH1.27*4.3 1*NP 90° 系列图

A4

料号(PART NO.): 2112-XX043RCGX-33

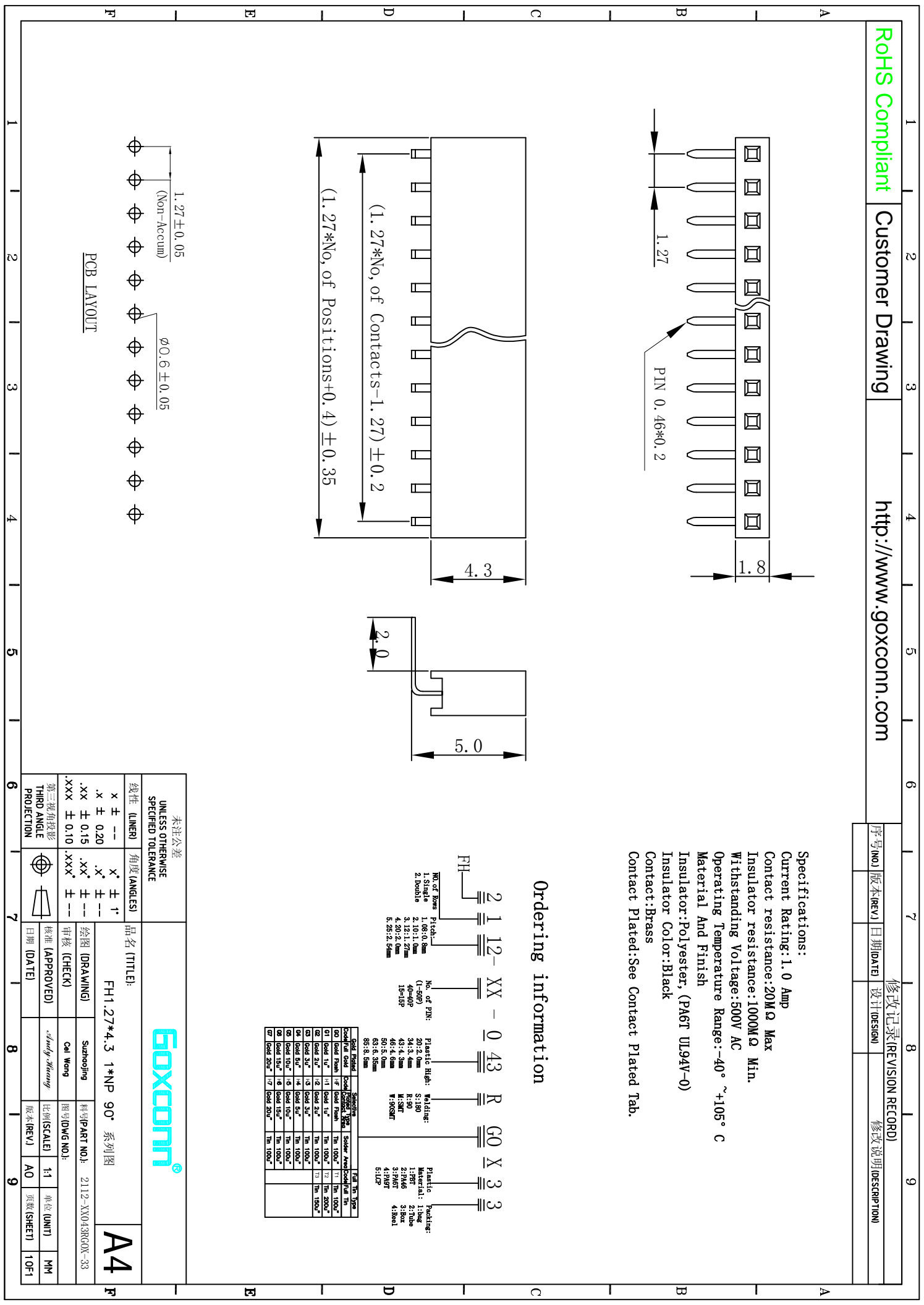
图号(DWG NO.):

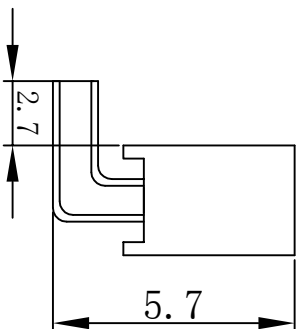
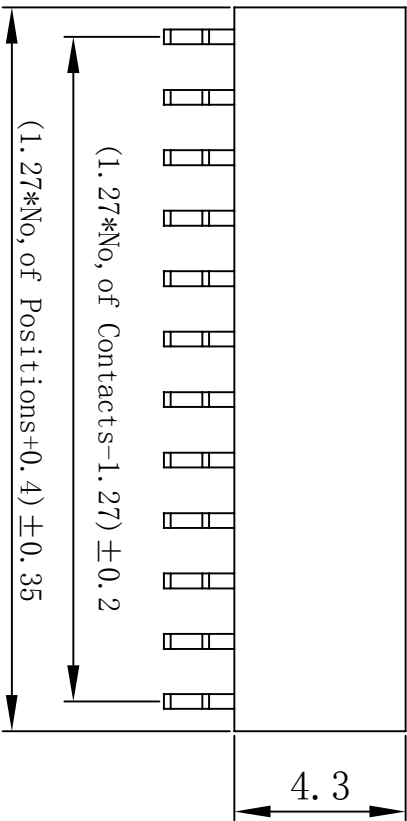
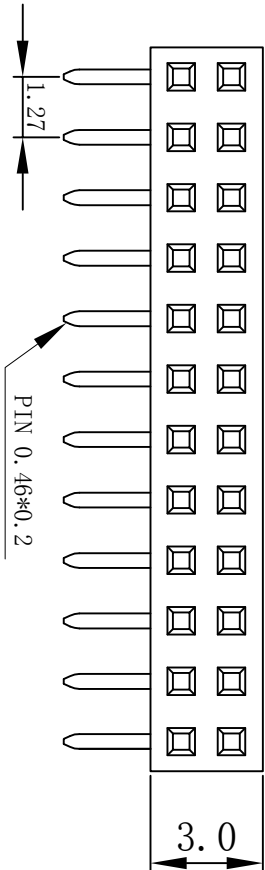
比例(SCALE)

版本(REV)

单位 (UNIT)

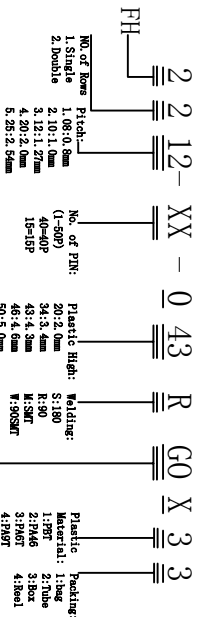
页次(SHEET)



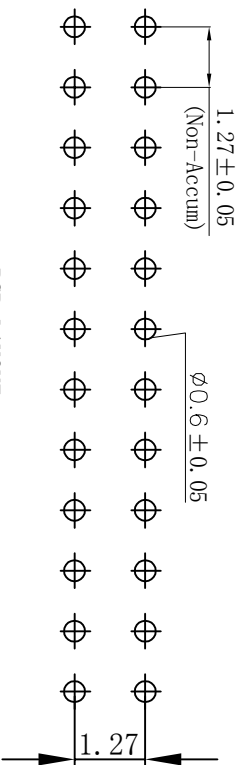


Specifications:
 Current Rating: 1.0 Amp
 Contact resistance: 20MΩ Max
 Insulator resistance: 1000MΩ Min.
 Withstanding Voltage: 500V AC
 Operating Temperature Range: -40° ~ +105° C
 Material And Finish
 Insulator: Polyester, (PA6T UL94V-0)
 Insulator Color: Black
 Contact: Brass
 Contact Plated: See Contact Plated Tab.

Ordering information



Code	Pin	Code	Pin	Code	Pin	Code	Pin
00	load 100"	11	load 100"	12	Th. 1000"	13	Th. 1500"
01	load 100"	14	load 100"	15	Th. 2000"	16	Th. 2500"
02	load 200"	17	load 200"	18	Th. 1000"	19	Th. 1500"
03	load 200"	20	load 200"	21	Th. 1000"	22	Th. 1500"
04	load 200"	23	load 200"	24	Th. 1000"	25	Th. 1500"
05	load 200"	26	load 200"	27	Th. 1000"	28	Th. 1500"
06	load 200"	29	load 200"	30	Th. 1000"	31	Th. 1500"
07	load 200"	32	load 200"	33	Th. 1000"	34	Th. 1500"



PCB LAYOUT



品名 (TITLE): FH1.27*4.3 2*NP 90° 系列图
 A4

UNLESS OTHERWISE SPECIFIED TOLERANCE		未注公差	
线性 (LINER)	角度 (ANGLES)	线性 (LINER)	角度 (ANGLES)
x ± --	x' ± ± 1'	x ± --	x' ± ± 1'
.x ± 0.20	.x' ± ± --	.x ± 0.20	.x' ± ± --
.xx ± 0.15	.xx' ± ± --	.xx ± 0.15	.xx' ± ± --
.xxx ± 0.10	.xxx' ± ± --	.xxx ± 0.10	.xxx' ± ± --

第三视角投影 THIRD ANGLE PROJECTION		核准 (APPROVED)	日期 (DATE)
绘图 (DRAWING)	审核 (CHECK)	日期 (DATE)	
Subdrawing	Call Wang	料号 (PART NO.):	2212-XX043RCGX-33
图号 (DWG NO.):	比例 (SCALE)	单位 (UNIT)	MM
版次 (REV):	版次 (REV):	页次 (SHEET)	1 OF 1